

### SVGA and old Legacy Signals

The 29LS081(71UN) Series of LCD chassis monitors has been designed for industrial applications in the Control field and other users that require a compact VGA monitor with a small footprint and a high brightness display with good viewing angles. The rugged, metal construction of the monitor ensures exceptional stability, especially important when touchscreen operation is necessary. Adjustable top and bottom fixing brackets allow easy mounting of the chassis to a front panel.

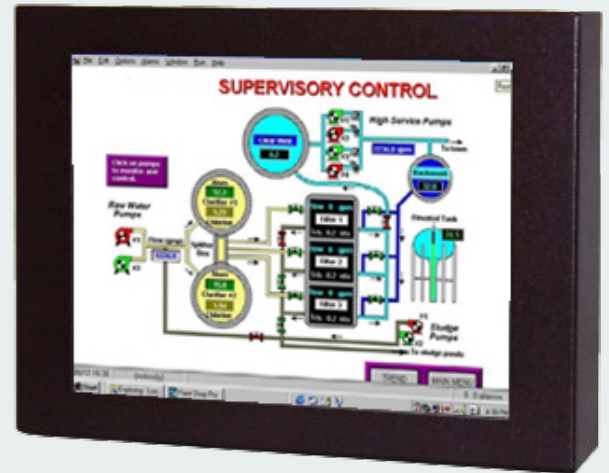
The KME A/D board has been designed to accept a wide range of signal timings from 15kHz up to VGA standard, including CGA & EGA legacy signals. Set-up controls for fine tuning of the display are located at the rear of the monitor. Once set, no further adjustments should be required, and the last setting is stored in memory.

Analogue & TTL signals are accepted via a 15D connector and a 2m VGA cable is supplied with the unit. KME can supply 9D-15D or BNC to 15D interface cables as required.

### Features

- High Brightness/High Contrast TFT panel
- 15 to 60kHz Horizontal Scanning range
- 40 to 100 Hz Vertical Scanning range
- Programmable for non-standard Legacy signals
- 12Vdc Operation (110/230Vac & 24Vdc options)
- EMC Shielded for CE requirements
- Optional Touchscreen Integration

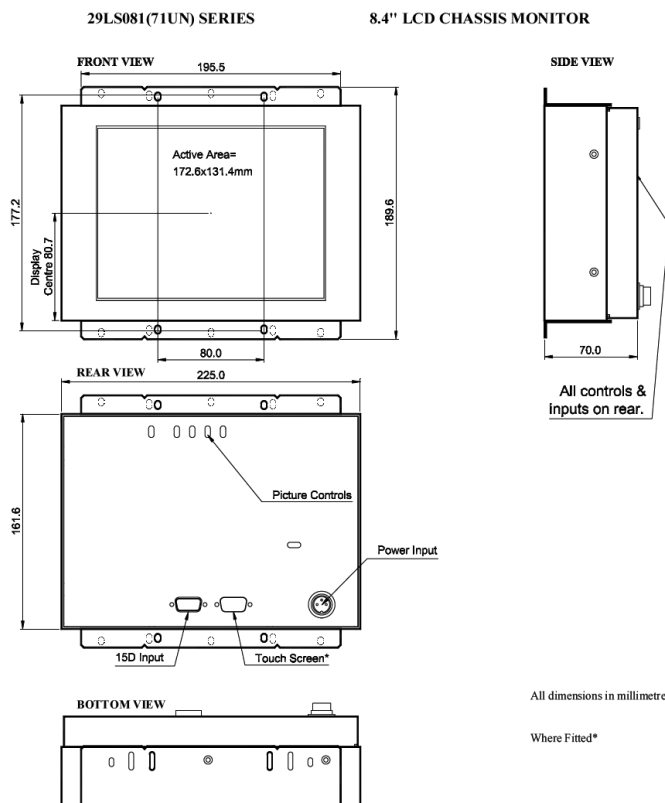
## 8.4" LCD Chassis Monitor 29LS081E71UN



Specifications: see next page

Specifications		
TFT Characteristics	Type Max. Resolution Active Display Area Display protection Contrast Ratio Brightness Viewing angles (at CR>10) Backlight Backlight life Nr. of colours	AM p-Si Colour TFT 800 x 600 pixels 170.4 x 127.8 mm Toughened Glass 500:1 typical 350 cd/m <sup>2</sup> typical 120°H, 100°V Dual Edge CFL x 2 50,000 hrs typical 256K
Video Signal	Analog RGB 0.7-1.0Vp-p	or TTL RGB>2.75Vp-p
Sync. Type/Level	Separate H&V (+/-ve) TTL	or Composite (-ve) TTL or Sync-on-Green (-ve) 0.3V
Synchronisation Range	Horizontal scan Vertical scan	15-60kHz 40-100Hz
Multiscan Support	800 x 600 SVGA 640 x 480 VGA	+ pre-programmed timings in 15-30kHz range
Clock Rate	80MHz max	
Power supply	External AC/DC Power Pack 110/230Vac 50/60Hz	
Power consumption	25W (Max)	
Environmental	Storage temp. Operating temp.	-20°C to 60°C 0°C to 50°C
Dimensions	Monitor	258 x 195 x 70 mm
	Weight	2.5 kg
Input	15-pin HD Female	
Housing	Painted aluminium	
User controls	Rear mounted	
On screen buttons	Brightness, Contrast, H/V Position & Size, Frequency, Frequency Fine	
Part numbers		
Model	29LS081E71UN	
AC Power Pack:	20BK0220/1	

Specifications are subject to change without notice.



## • Monitors

- Desktop Monitors
- Large screen Monitors
- Custom-made Monitors
- 19" Rack Mount Monitors
- Rear Mount Monitors
- Monitors for Panel Mount
- Monitors for VESA Mount
- Kiosks
- Accessories

## • Monitors – Specific applications

- Stainless Steel Monitors
- Car Displays
- Marine Monitors
- Military Monitors
- Replacement Monitors
- Train Monitors

## • Panel PC's

- High Performance Systems
- Custom made Panel PC's
- Low Power Systems
- Extreme environments

## • Pointing devices

- Accessories
- Touchpads
- Trackballs
- Trackball Modules
- Joysticks
- Custom made Pointing Devices

## • Keyboards

- Desktop Keyboards with or without pointer
- Built-in Keyboards with or without pointer
- Cables & Connectors
- Custom made Keyboards



Mulder-Hardenberg, est. 1927, is the answer to professional demands in the domain of electronic related environments. We don't just sell products. We use our multidiscipline knowledge to provide the best possible solution, designed to your specific interest.

### Contact details:

The Netherlands  
 Mulder-Hardenberg B.V.  
 Westerhoutpark 1a  
 2012 JL Haarlem  
 Tel.: +31 23 531 91 84  
 info.nl@m-h.biz

Belgium, France, Luxemburg  
 Mulder-Hardenberg N.V.  
 Hoge Weg 129  
 B-2940 Stabroek  
 Belgium  
 Tel.: +32 3 660 13 20  
 info.be@m-h.biz

Germany  
 Mulder-Hardenberg GmbH  
 Nordring 13  
 D-65719 Hofheim/Ts  
 Tel.: +49 6192 - 97 91 85  
 info.de@m-h.biz